



THEN

August 18, 2009



AND NOW ...

Sept. 17, 2009



Note the new molding here along the roof

The weight bearing part of a column or pillar is on the inside as this rotted piece shows clearly.

The old style parapets ...



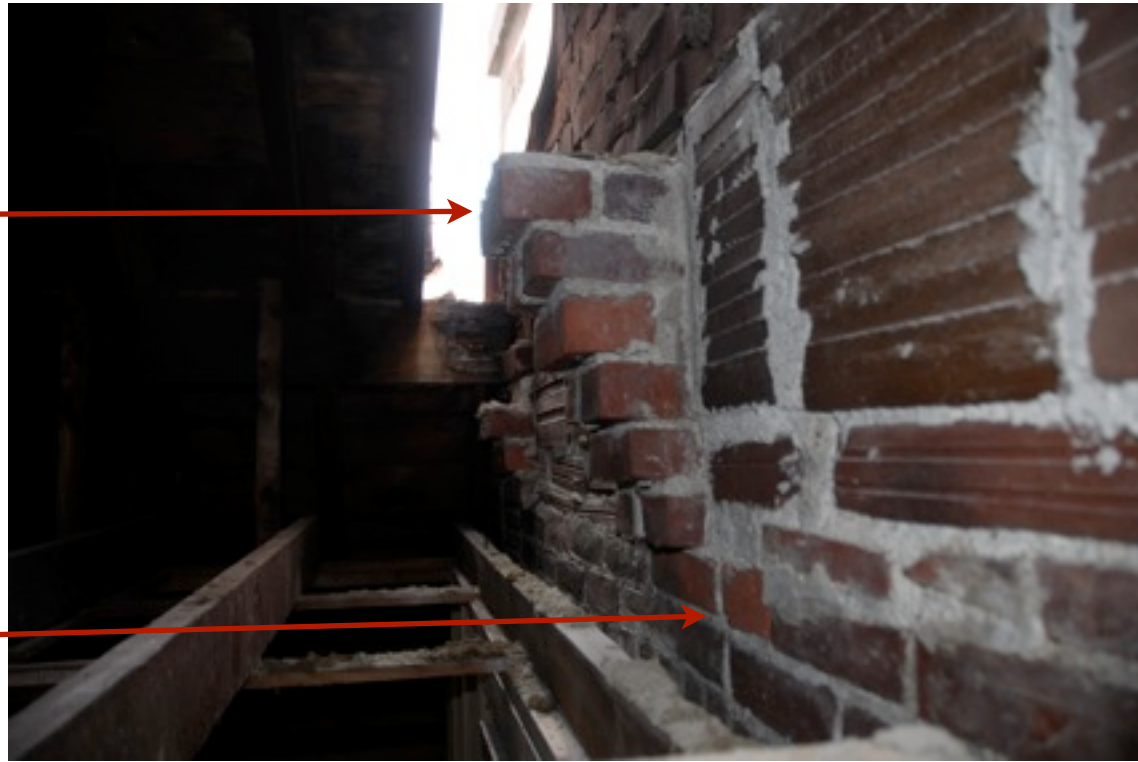
... and the new style



If you're wondering why the old parapets sagged and leaned inwards, (see picture below), it's because there are only 2 of these supports on each end wall that held up an additional 8-inch thick brick parapet atop each of Sigma Beta.

Beta's walls consist of a 12-inch thick brick exterior. The old parapets left the roof top with 20 inches of red brick and an unwieldy weight that - if it fell - was sure to go through to the basement.

Inside edge of 12-inch brick outer wall



Look at the lean of the old parapets from this August 8, 2009 photograph.





note the new flashing  
and new design

